

## About Individuals...



Forklift Operator



Publican



Ceramic Restorer



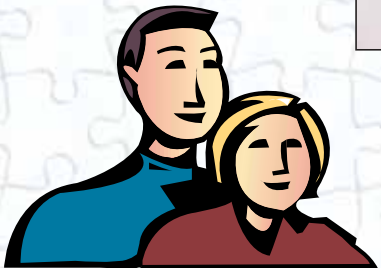
Painter &  
Decorator



Gardener



Freelance Designer



**Targeted education and  
retraining to help you  
get back into work**



Arthur Emanuel, Regional Officer  
Amicus the Union  
Terry Duffy House, Thomas Street,  
West Bromwich B70 6NT.

  
**amicus**  
*the union*

  
**amicus**  
*the union*

Amicus the Union in the West Midlands

**Are you facing  
redundancy?**

**We can help you at Amicus**

**Telephone:  
0121 569 8900**

Back into Employment Through Targeted Education and Retraining

## Practical Help... for you

Amicus, working with its partner Trade Unions and the Learning and Skills Council, have secured funding to help you.

Through our BETTER WEST MIDLANDS programme you can get FREE support and help. This includes

- Confidential advice
- Free training
- Ongoing Mentoring

See the enclosed BETTER WEST MIDLANDS leaflet for more details



[www.amicustheunion.org](http://www.amicustheunion.org)

## Help Yourself...

### Help Yourself...

- Do not miss out on this opportunity. Even if you have no immediate training needs, you may need support later.
- Find out more about this project by contacting your HR Department, your trade union official or contact us directly.
- ***Remember! This project is run for the benefit of one person... YOU!***

### About the project...

This is a new initiative which builds on earlier successful projects and is delivered by the trade unions in partnership with the West Midlands Learning and Skills Council (LSC). The project is funded by the European Social Fund.

Amicus also works closely with Jobcentre Plus.  
[www.jobcentreplus.gov.uk](http://www.jobcentreplus.gov.uk)

## Membership Bonus

Upon completing your training course and reactivating your direct debit payment, you will be eligible after six monthly payments, to apply for a refund of 50% of your subscriptions, as a thank you for rejoining.

Any applications for a refund must be made by the member by contacting the West Midlands Regional Office.

Please contact Grace Clarke on 0121 569 8905 for further details.

